

Sculpted resins, plated metals, faceted crystals — It is the distinct use of these materials that makes Susan Goldstick's style truly unique.

As a handy reference guide, our jewel tone color chart helps you understand the components of our decorative hardware and how you can search and make your selection based on color themes. When you search by our color names you can see all our products with matching colors including cabinet knobs and pulls, drapery hardware, switch plates, lamps and furniture.

Custom* Options

Don't see your favorite knob, or drapery finial in the colors that match your décor? We can substitute resin, crystal and metal colors to suit your project. For example, if you want to coordinate a knob or pull to match brushed nickel fixtures or cabinet hinges, we can create it with silver metal. Realize all color substitutions may not be feasible with every product style. But there are plenty of choices and we urge you to consult with us to discuss the possibilities.

*customization upcharge may apply.

Cabinet Pulls

Cast resin handles are available in 3 colors:



Eel Iris left with cast resin in silver

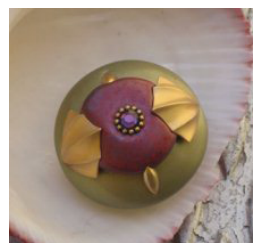


Eel Iris right with cast resin in gold



Orbit7 Poppy with cast resin in amber

Understanding Descriptions:



Cleo #449
Hand sculpted cabinet knob with gold metal and colored in jade and garnet with amethyst crystal



Tieback Merlin #44
Hand sculpted tieback with gold metal and colored in amethyst and jade with olivine crystal

Cabinet knob descriptions list the resin colors from bottom to top. The base or stem of the knob (not pictured) is painted gold or silver to match the metal color on the knob. Drapery finial and tieback descriptions also list the resin colors from bottom to top. The base of the finial or tieback is painted with a blend of matching colors including a gold or silver paint to coordinate with the metals. Examples see above.

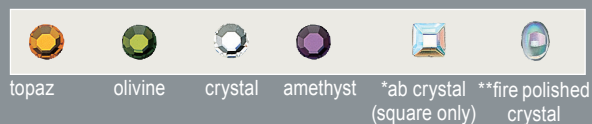
KNOB AND FINIAL RESIN COLORS



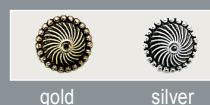
NEW COLORS



CRYSTALS



METALS



* available on #8 only
**available on #4 only

Basic Black

Although not a jewel tone, black resin and black cabochons play a key role in the design of many knob, pull and finial styles.



Sm Tiki #312
Hand sculpted cabinet knob with silver metal and colored in jade, amber and black with crystal



Finial Erte #1112
Hand sculpted finial with gold metal and colored in light bronze and jade with black cabochon and amethyst crystal.